



L/B NEW ORLEANS Super 175' Class

SELF-ELEVATING VESSEL – YEAR BUILT – 2003
OFFICIAL # - 1062037 – CALL SIGN - WCX9622

Alliance Offshore, LLC
P. O. Box 999
Larose, LA 70373
Phone: 985-798-5700
Fax: 985-798-5738

DEMENSIONS:

Length (Overall) 131'
Beam (Overall) 77'
Beam (Barge Only) 69'
Depth (Barge Only) 10'
Design Draft 9'

HULL CHARACTERISTICS:

Gross Tonnage (US Reg.) Under 200
Open Deck 4,000 sq. ft.
Total Usable Space 5,000 sq. ft.
Variable Allowable Load 550,000 lbs.

LEGS:

Number 3
Length 175'
Size 52" Dia. x 1.5" wall
Material API 5LX-70 KSI Steel

PADS:

Length 28'
Width 13'-9"
Depth 3'

REGULATORY CLASS:

USCG O.S.V., ABS Load Line

CRANES:

Cummins KTA-19
Primary Crane 100 Ton @ 25' Radius
Boom Length 90'
Heel Pin Above Deck 11'
Cummins 6 CTA 8.3-DM
Auxiliary Crane 25 tons
Auxiliary Boom "Telescopic" 40' - 70'

PROPULSION:

Main Engines KTA-38-MO
Horsepower/Engine 855 @ 1800 rpm
Reduction Gear Twin Disc MG-530-5:1
Estimated Speed 6 knots

GENERATORS:

Cummins 6 CTA 8.3-DM
2 each 160 KW / 440 Volt

CAPACITIES:

Fuel: 10,300 gls.
Potable Water: 10,000 gls.
Lube Oil: 350 gls.
Hydraulic Oil: 525 gls.
Submersible Pumps: 2 @ 150 gpm each

NAVIGATION EQUIPMENT:

Radar, VHF, Fathometer, Compass,
Single Side Band, AIS, Auto Pilot, GPS,
Anemometer, Electronic Coastal Plotter,
Satellite Communications w/ Email.

JACKING:

Max. Working Water Depth 130'
Jacking Speed 8' minute

Special Features:

Separate VIP Room
Zero Discharge Capability
Marine Sewage Treatment System

ACCOMMODATIONS:

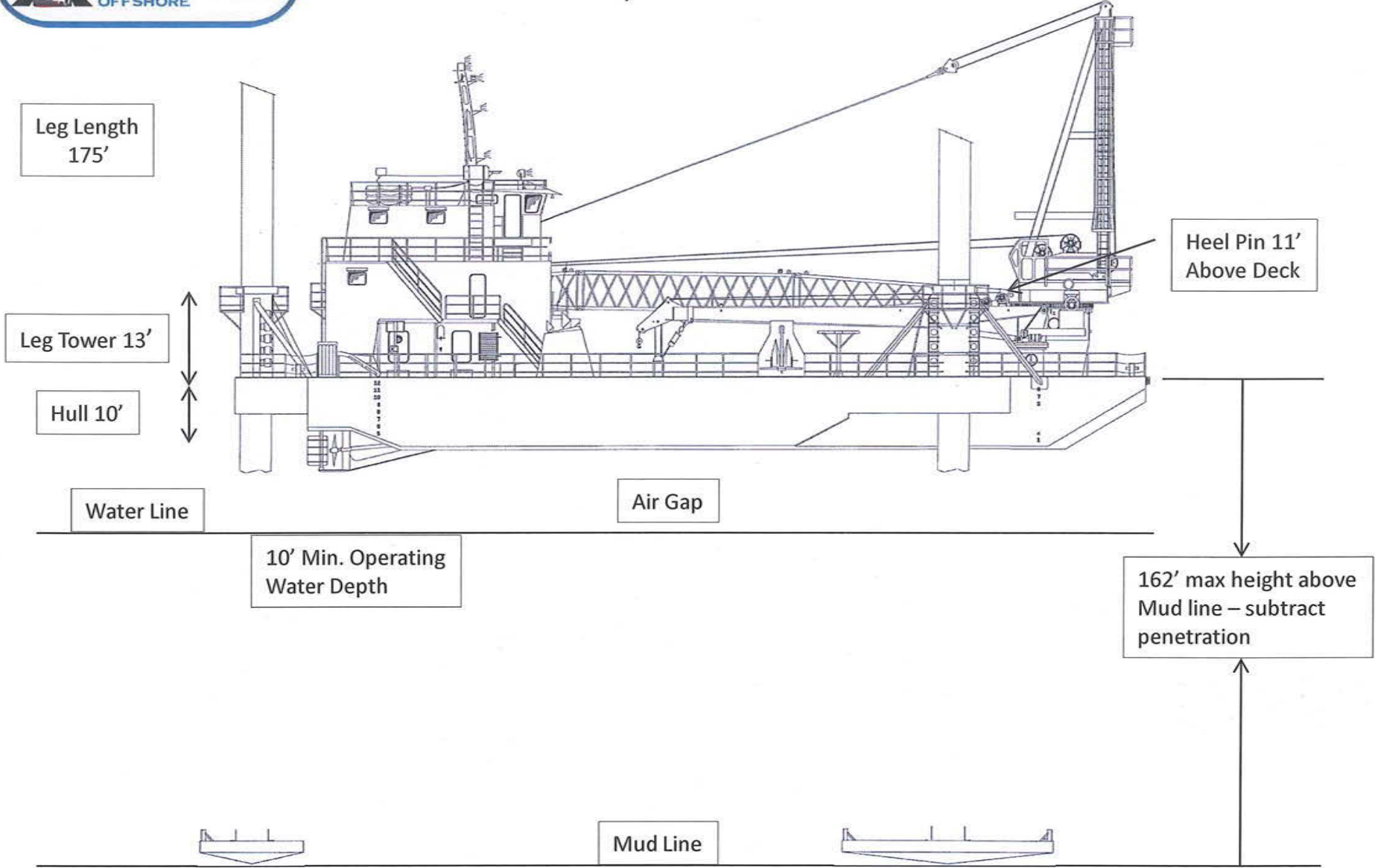
Berths: Total 36 (6 crew /30 PACS)

FUEL CONSUMPTION:

Cummins KTA 38MO
Mains: 85.6 gal/hr = 2,054 gal/day
Generators: 10.8 gal/hr = 259 gal/day
Main Crane : 25 gal/hr = 600 gal/day
Aux. Crane: 10.8 gal/hr = 259 gal/day

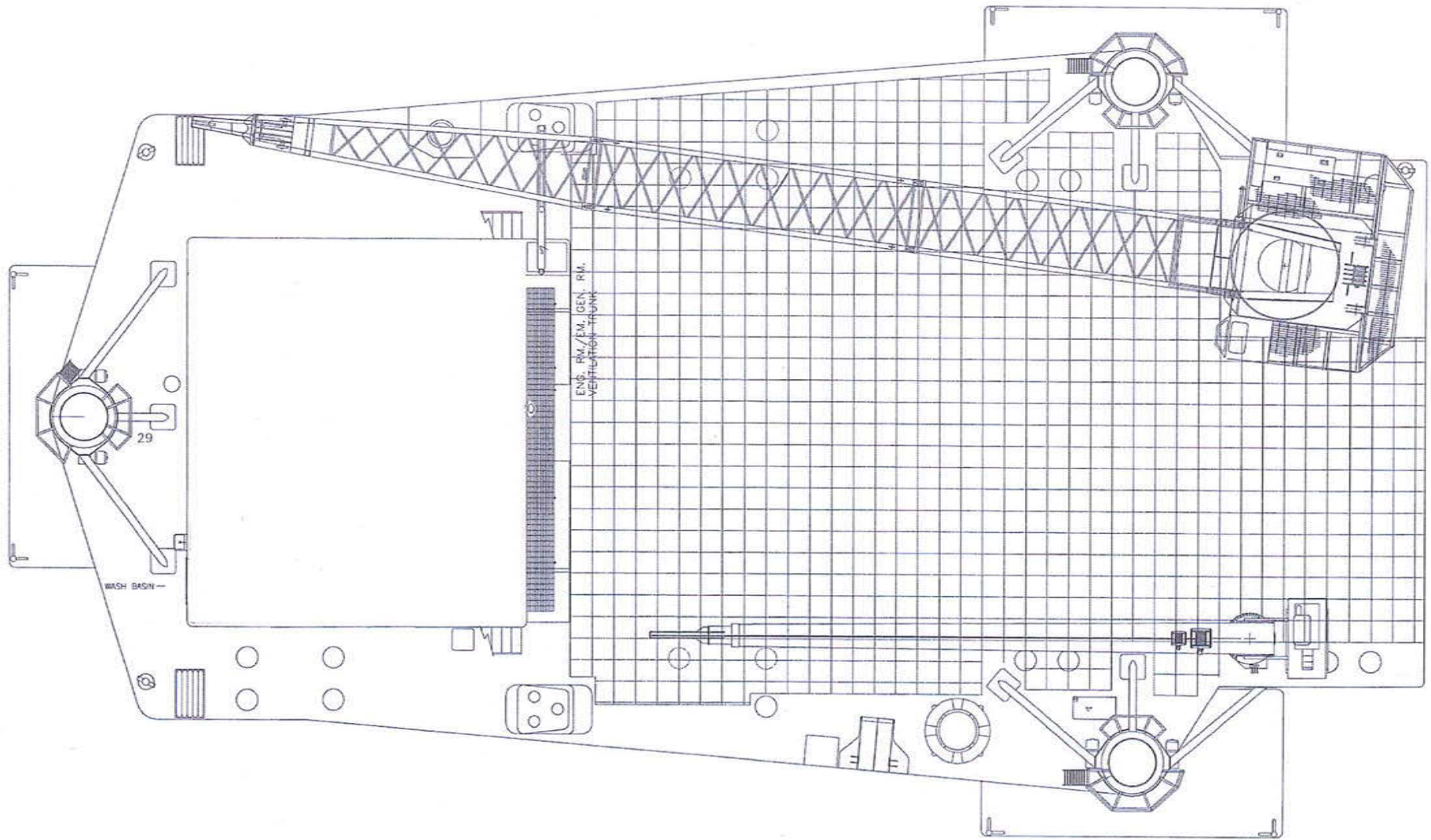


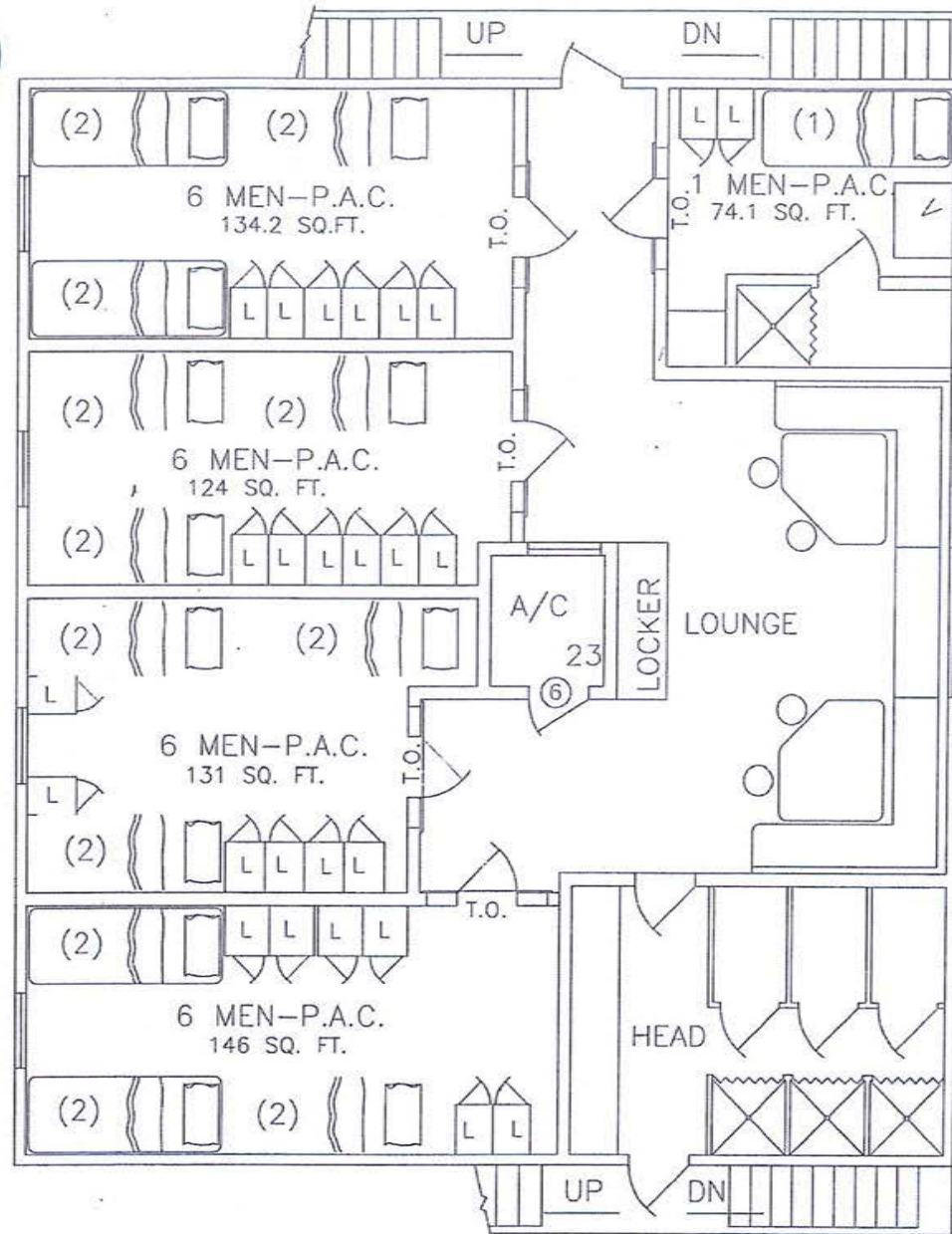
Super 175'- Class



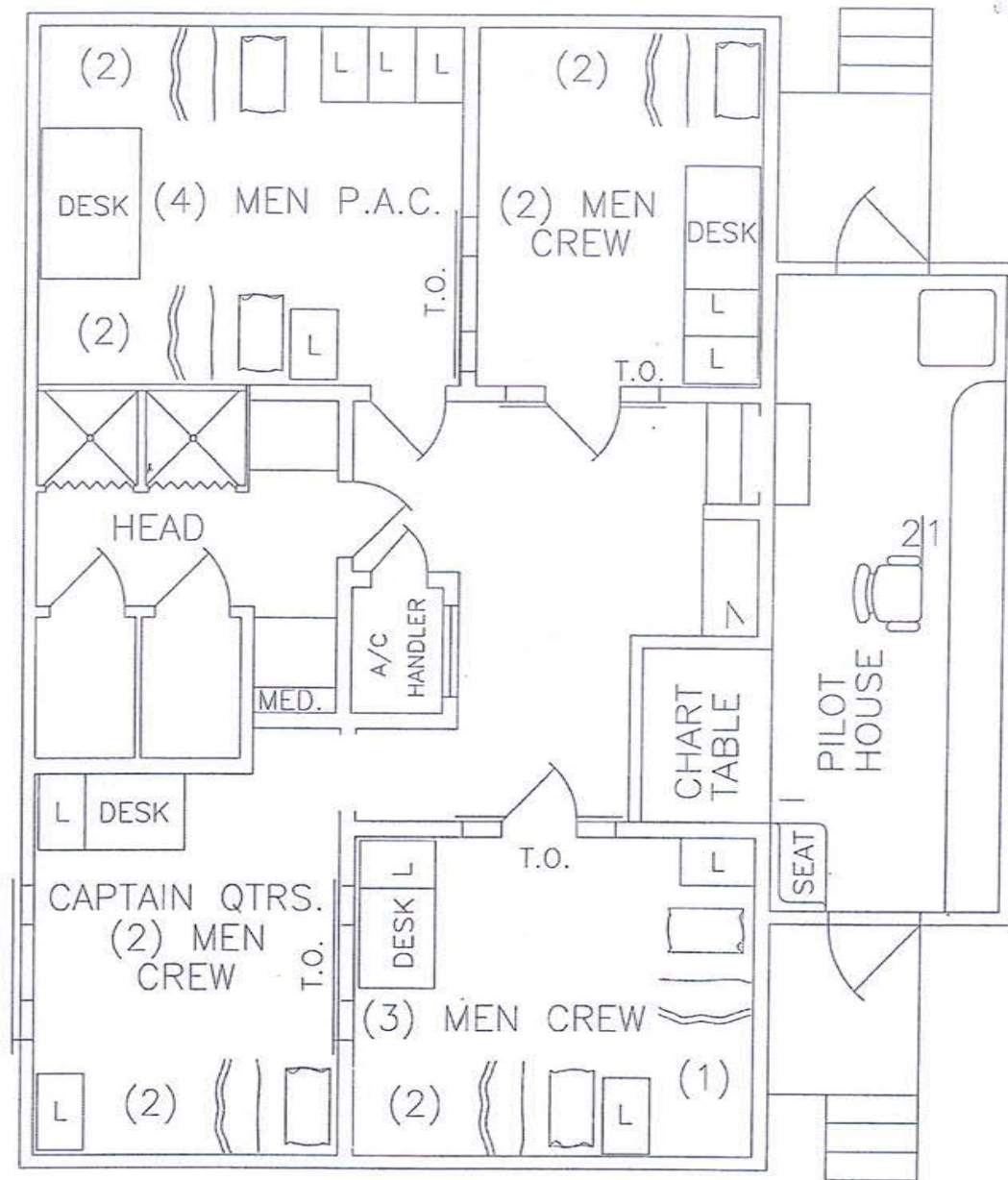


Super 175 Class 2' x 2' Deck Grid





01 Quarters



DECK LEVEL 02



APPLIED HYDRAULIC SYSTEMS, INC.
204 INDUSTRIAL AVENUE C
HOUMA, LOUISIANA 70363
(985) 851-5600



LIFTING LOAD CAPACITY CHART NAUTILUS MODEL 1000L4-90 MARINE CRANE



RADIUS (FT.)	BOOM ANGLE (DEG.)	MAIN HOIST						AUXILIARY HOIST			RADIUS (FT.)	BOOM ANGLE (DEG.)
		8 PART REEVING		6 PART REEVING		4 PART REEVING		1 PART REEVING		PERSONNEL (LBS.)		
		STATIC RATED LOAD (LBS.)	DYNAMIC RATED LOAD (LBS.)	STATIC RATED LOAD (LBS.)	DYNAMIC RATED LOAD (LBS.)	STATIC RATED LOAD (LBS.)	DYNAMIC RATED LOAD (LBS.)	STATIC RATED LOAD (LBS.)	DYNAMIC RATED LOAD (LBS.)			
21	81	200,000	133,333	160,192	133,333	107,709	107,709	11,825	9,333	3,407	21	81
25	78	200,000	133,333	160,192	133,333	107,709	107,709	11,825	9,333	3,407	25	78
30	75	200,000	133,333	160,192	133,333	107,709	107,709	11,825	9,333	3,407	30	75
35	72	185,970	122,647	160,192	122,647	107,709	107,709	11,825	9,333	3,407	35	72
40	68	162,244	106,829	160,192	106,829	107,709	106,829	11,825	9,333	3,407	40	68
45	65	143,721	94,481	143,721	94,481	107,709	94,481	11,825	9,333	3,407	45	65
50	61	128,614	84,409	128,614	84,409	107,709	84,409	11,825	9,333	3,407	50	61
55	58	115,878	75,919	115,878	75,919	107,709	75,919	11,825	9,333	3,407	55	58
60	54	104,852	68,568	104,852	68,568	104,852	68,568	11,825	9,333	3,407	60	54
65	50	95,090	62,060	95,090	62,060	95,090	62,060	11,825	9,333	3,407	65	50
70	45	86,269	56,179	86,269	56,179	86,269	56,179	11,825	9,333	3,407	70	45
75	41	78,132	50,755	78,132	50,755	78,132	50,755	11,825	9,333	3,407	75	41
80	35	70,447	45,631	70,447	45,631	70,447	45,631	11,825	9,333	3,407	80	35
83	30	62,950	40,633	62,950	40,633	62,950	40,633	11,825	9,333	3,407	83	30
90	22	55,200	35,467	55,200	35,467	55,200	35,467	11,825	9,333	3,407	90	22
95	11	45,682	29,121	45,682	29,121	45,682	29,121	11,825	9,333	3,407	95	11
97	0	37,987	23,991	37,987	23,991	37,987	23,991	11,825	9,333	3,407	97	0

- NOTES: - MAIN HOIST CAPACITIES ARE BASED ON 1 1/8" DIAMETER, DYFORM 18 HSLR WIRE ROPE. (BREAKING STRENGTH = 143,000 LBS.) 1793 FT. OF WIRE ROPE IS REQUIRED.
- AUXILIARY HOIST CAPACITIES ARE BASED ON TWO PART REEVING OF 3/4" DIAMETER, DYFORM 18 HSLR WIRE ROPE. (BREAKING STRENGTH = 64,800 LBS.) 350 FT. OF WIRE ROPE IS REQUIRED.
- ALL RATINGS IN ACCORDANCE WITH API SPECIFICATION 2C (SPEC 2C), FIFTH EDITION, APRIL 3, 1995.
- THE ABOVE RATINGS ARE CONSIDERED NET RATINGS AS THE MAIN LOAD BLOCK WEIGHT OF 4000 LBS. AND AUXILIARY LOAD BLOCK WEIGHT OF 200 LBS. HAVE BEEN SUBTRACTED.
- DYNAMIC RATINGS ARE BASED ON A DYNAMIC COEFFICIENT OF 2.0

CRANE SN: 060204C

P/N: N2003SK3-003



APPLIED HYDRAULIC SYSTEMS, INC.
204 INDUSTRIAL AVENUE C
HOUMA, LOUISIANA, U.S.A.
(985) 851-5600



NAUTILUS
MARINE CRANES

LIFTING LOAD CAPACITY CHART
NAUTILUS MODEL 60B1AT-45/70 MARINE CRANE

45' BOOM - POINT RETRACTED								
RADIUS (ft)	BOOM ANGLE (deg)	MAIN HOIST				AUX HOIST		
		FOUR PART REEVING		SIX PART REEVING		STATIC LOAD (lb)	DYNAMIC LOAD (lb)	PERSONNEL LOAD (lb)
		STATIC LOAD (lb)	DYNAMIC LOAD (lb)	STATIC LOAD (lb)	DYNAMIC LOAD (lb)			
8.6	81	35,520	33,333	50,000	33,333	8,610	8,610	2,436
10	79	35,520	29,269	44,304	29,269	8,610	8,610	2,436
15	72	30,532	20,088	30,532	20,088	8,610	8,610	2,436
20	66	22,800	14,933	22,800	14,933	8,610	8,610	2,436
25	58	17,842	11,628	17,842	11,628	8,610	8,610	2,436
30	51	14,382	9,321	14,382	9,321	8,610	8,610	2,436
35	41	11,837	7,625	11,837	7,625	8,610	8,215	2,436
40	30	9,874	6,316	9,874	6,316	8,610	6,906	2,436
45	0	8,291	5,261	8,291	5,261	8,610	5,851	2,436

70' BOOM - POINT EXTENDED								
RADIUS (ft)	BOOM ANGLE (deg)	MAIN HOIST				AUX HOIST		
		FOUR PART REEVING		SIX PART REEVING		STATIC LOAD (lb)	DYNAMIC LOAD (lb)	PERSONNEL LOAD (lb)
		STATIC LOAD (lb)	DYNAMIC LOAD (lb)	STATIC LOAD (lb)	DYNAMIC LOAD (lb)			
11	81	34,964	23,043	34,964	23,043	8,610	8,610	2,436
15	78	26,825	17,617	26,825	17,617	8,610	8,610	2,436
20	74	20,111	13,141	20,111	13,141	8,610	8,610	2,436
25	69	15,776	10,251	15,776	10,251	8,610	8,610	2,436
30	65	12,737	8,225	12,737	8,225	8,610	8,610	2,436
35	60	10,496	6,731	10,496	6,731	8,610	7,321	2,436
40	56	8,767	5,578	8,767	5,578	8,610	6,168	2,436
45	50	7,400	4,667	7,400	4,667	7,990	5,257	2,436
50	45	6,285	3,923	6,285	3,923	6,875	4,513	2,152
55	39	5,360	3,307	5,360	3,307	5,950	3,897	1,843
60	32	4,518	2,745	4,518	2,745	5,108	3,335	1,563
65	22	3,914	2,343	3,914	2,343	4,504	2,933	1,361
70	0	3,329	1,953	3,329	1,953	3,919	2,543	1,166

NOTE: - MAIN HOIST CAPACITIES ARE BASED ON 4 OR 6 PART REEVING OF 5/8" DIAMETER, DYFORM-18 HSLR WIRE ROPE. (BREAKING STRENGTH = 45,400 LBS.). 677 FT. OF ROPE IS REQUIRED.
- AUX HOIST CAPACITIES ARE BASED ON ONE PART REEVING OF 5/8" DIAMETER, DYFORM-18 HSLR WIRE ROPE. (BREAKING STRENGTH = 45,400 LBS.). 287 FT. OF ROPE IS REQUIRED.
- SHEAVE EFFICIENCY IS INCLUDED.
- ALL RATINGS IN ACCORDANCE WITH API SPECIFICATION 2C (SPEC 2C), FIFTH EDITION, APRIL 3, 1995. A DYNAMIC COEFFICIENT (cb) OF 2.0 IS USED.
- THE ABOVE RATINGS ARE CONSIDERED "NET RATINGS" AS THE LOAD BLOCK WEIGHT OF 800 LBS AND THE OVERHAUL BALL WEIGHT OF 210 LBS HAS ALREADY BEEN SUBTRACTED