



**L/B Houston  
Super 175' Class**

**SELF-ELEVATING VESSEL – YEAR BUILT – 2002  
OFFICIAL # - 1125202– CALL SIGN - WDH8950**

**Alliance Offshore, LLC**  
P. O. Box 999  
Larose, LA 70373  
Phone: 985-798-5700  
Fax: 985-798-5738

**DEMENSIONS:**

|                    |      |
|--------------------|------|
| Length (Overall)   | 131' |
| Beam (Overall)     | 77'  |
| Beam (Barge Only)  | 69'  |
| Depth (Barge Only) | 10'  |
| Design Draft       | 9'   |

**HULL CHARACTERISTICS:**

|                         |               |
|-------------------------|---------------|
| Gross Tonnage (US Reg.) | Under 200     |
| Open Deck               | 4,000 sq. ft. |
| Total Usable Space      | 5,000 sq. ft. |
| Variable Allowable Load | 550,000 lbs.  |

**LEGS:**

|          |                      |
|----------|----------------------|
| Number   | 3                    |
| Length   | 175'                 |
| Size     | 52" Dia. x 1.5" wall |
| Material | API 5LX-70 KSI Steel |

**PADS:**

|        |        |
|--------|--------|
| Length | 28'    |
| Width  | 13'-9" |
| Depth  | 3'     |

**REGULATORY CLASS:**

USCG O.S.V., ABS Load Line

**CRANES:**

|                             |                      |
|-----------------------------|----------------------|
| Cummins                     | KTA-19               |
| Primary Crane               | 100 Ton @ 25' Radius |
| Boom Length                 | 90'                  |
| Heel Pin Above Deck         | 11'                  |
| Cummins                     | 6 CTA 8.3-DM         |
| Auxiliary Crane             | 25 tons              |
| Auxiliary Boom "Telescopic" | 40'- 70'             |

**PROPULSION:**

|                   |                      |
|-------------------|----------------------|
| Main Engines      | KTA-38-MO            |
| Horsepower/Engine | 855 @ 1800 rpm       |
| Reduction Gear    | Twin Disc MG-530-5:1 |
| Estimated Speed   | 6 knots              |

**GENERATORS:**

|         |                   |
|---------|-------------------|
| Cummins | 6-CTA 8.3-DM      |
| 2 each  | 160 KW / 440 Volt |

**CAPACITIES:**

|                    |                  |
|--------------------|------------------|
| Fuel:              | 10,300 gls.      |
| Potable Water:     | 10,000 gls.      |
| Lube Oil:          | 350 gls.         |
| Hydraulic Oil:     | 525 gls.         |
| Submersible Pumps: | 2 @ 150 gpm each |

**NAVIGATION EQUIPMENT:**

Radar, VHF, Fathometer, Compass, Single Side Band, AIS, Auto Pilot, GPS, Anemometer, Electronic Coastal Plotter, Satellite Communications w/ Email.

**JACKING:**

|                          |           |
|--------------------------|-----------|
| Max. Working Water Depth | 130'      |
| Jacking Speed            | 8' minute |

**Special Features:**

Separate VIP Room  
Zero Discharge Capability  
Marine Sewage Treatment System

**ACCOMMODATIONS:**

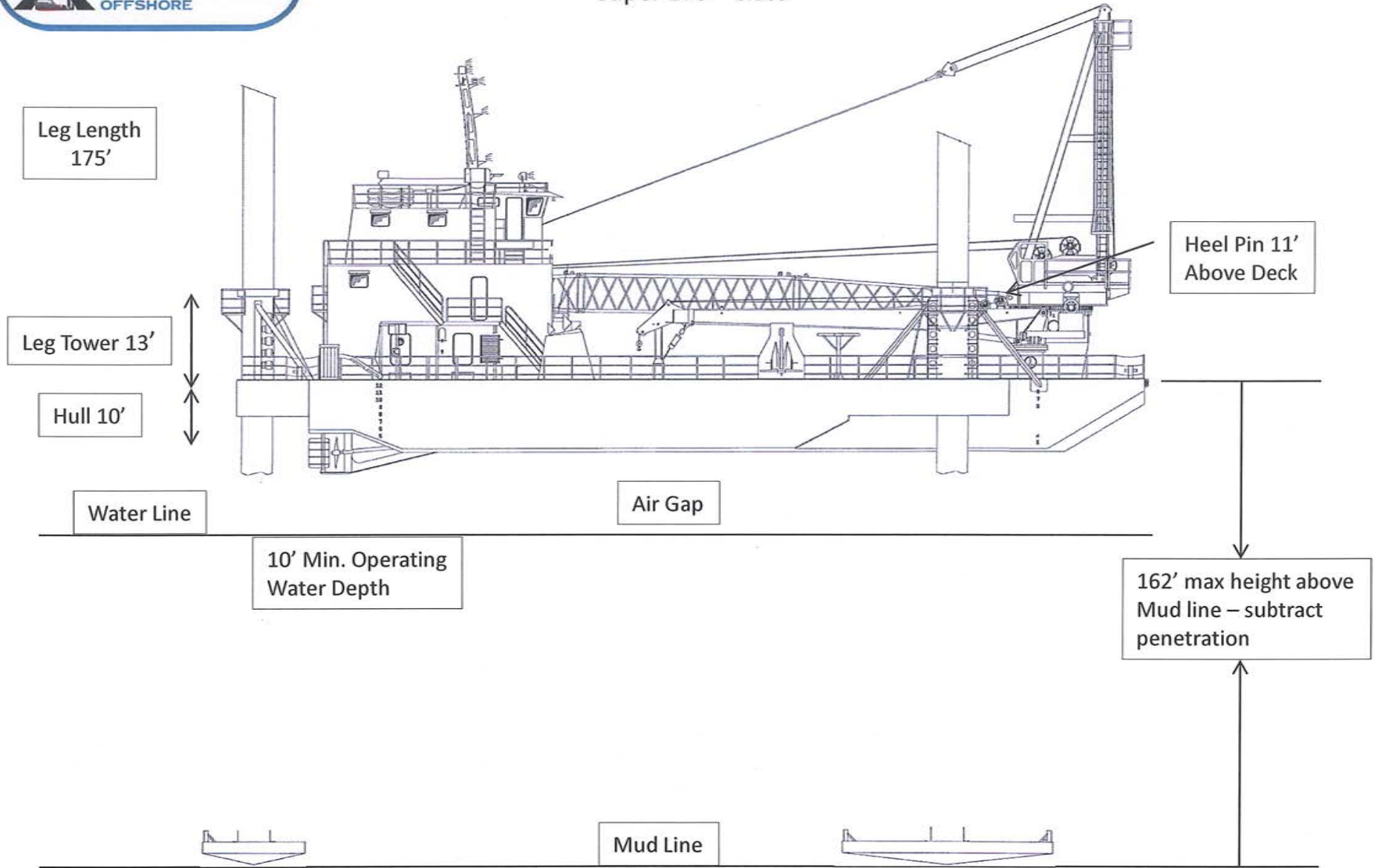
Berths: Total 36 (6 crew /30 PACS)

**FUEL CONSUMPTION:**

|                  |                             |
|------------------|-----------------------------|
| Cummins KTA 38MO |                             |
| Mains:           | 85.6 gal/hr = 2,054 gal/day |
| Generators:      | 10.8 gal/hr = 259 gal/day   |
| Main Crane :     | 25 gal/hr = 600 gal/day     |
| Aux. Crane:      | 10.8 gal/hr = 259 gal/day   |

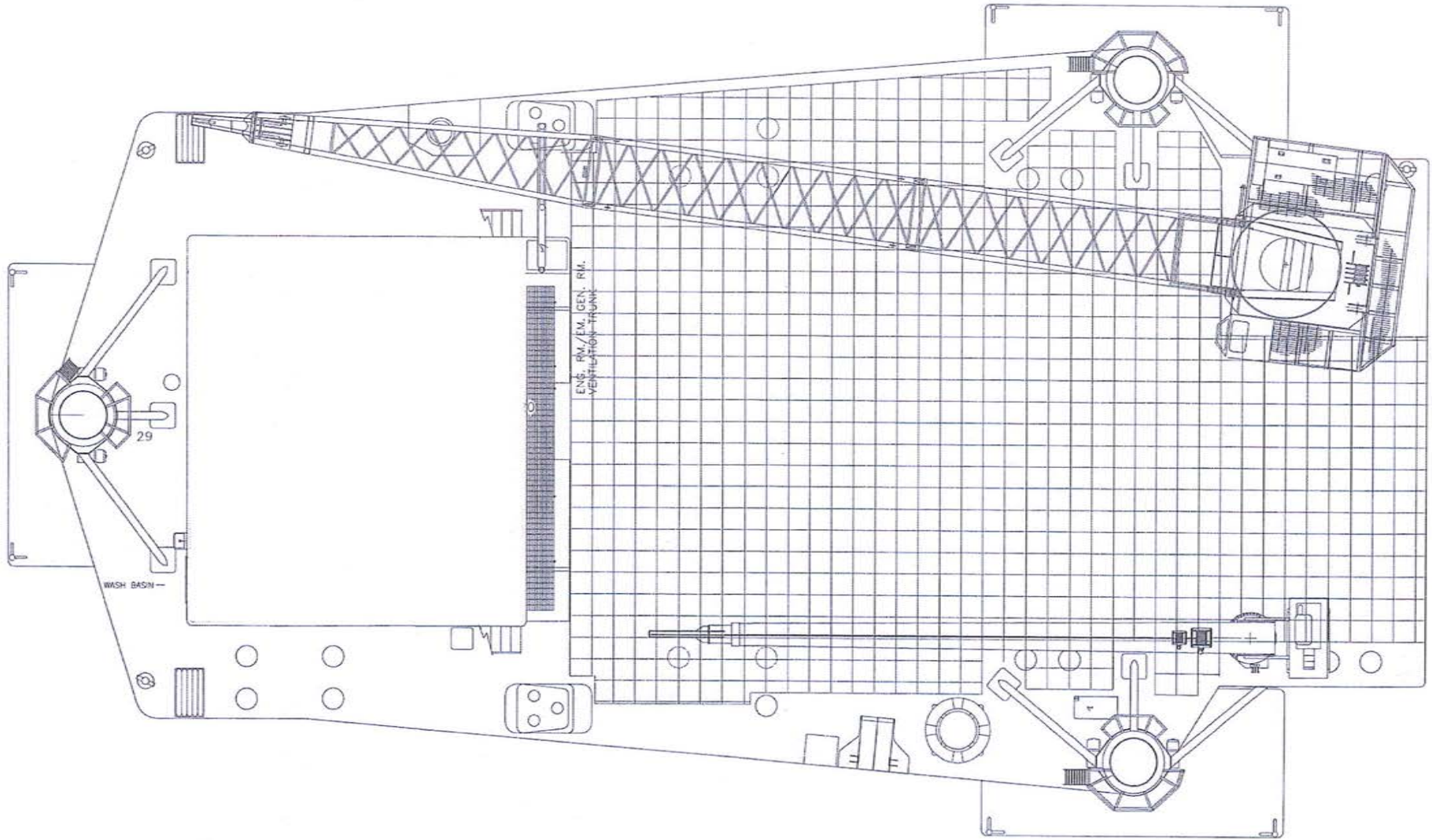


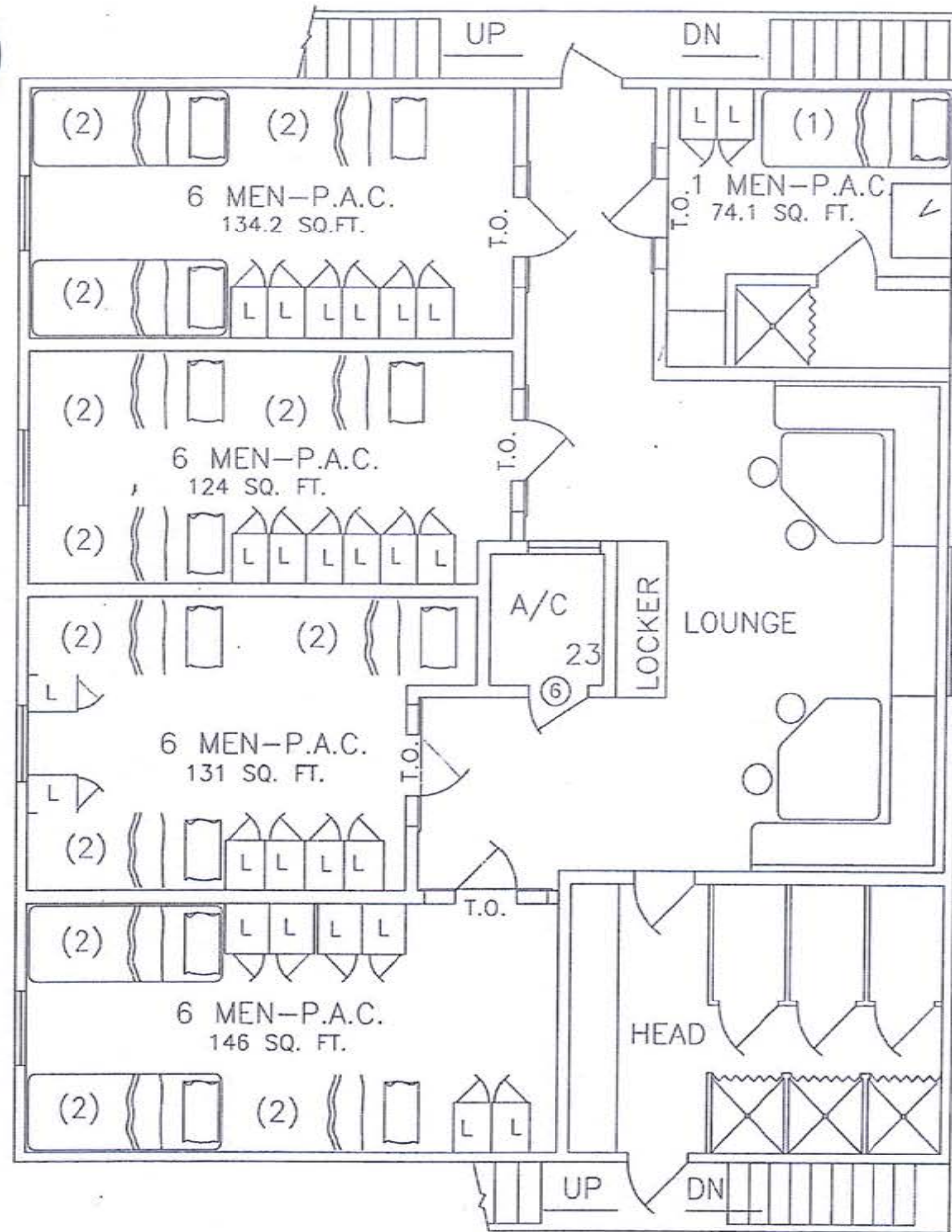
Super 175'- Class



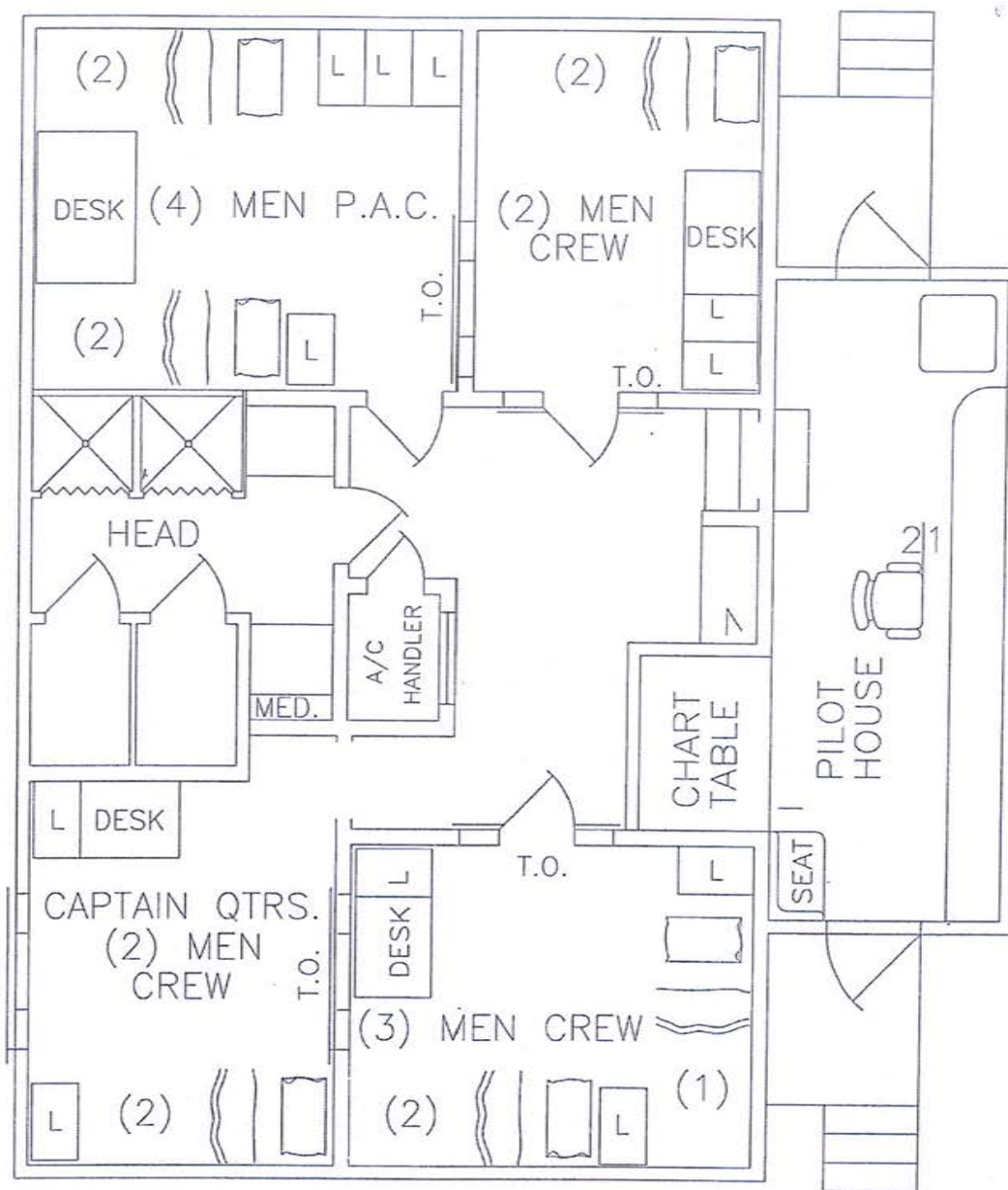


### Super 175 Class 2' x 2' Deck Grid





01 Quarters



DECK LEVEL 02



APPLIED HYDRAULIC SYSTEMS, INC.  
204 INDUSTRIAL AVENUE C  
HOUMA, LOUISIANA 70363  
(985) 851-5600



## LIFTING LOAD CAPACITY CHART NAUTILUS MODEL 1000L4-90 MARINE CRANE



| RADIUS<br>(FT.) | BOOM<br>ANGLE<br>(DEG.) | MAIN HOIST                     |                                 |                                |                                 |                                |                                 | AUXILIARY HOIST                |                                 |                     | PERSONNEL<br>(LBS.) | RADIUS<br>(FT.) | BOOM<br>ANGLE<br>(DEG.) |
|-----------------|-------------------------|--------------------------------|---------------------------------|--------------------------------|---------------------------------|--------------------------------|---------------------------------|--------------------------------|---------------------------------|---------------------|---------------------|-----------------|-------------------------|
|                 |                         | 8 PART REEVING                 |                                 | 6 PART REEVING                 |                                 | 4 PART REEVING                 |                                 | 1 PART REEVING                 |                                 |                     |                     |                 |                         |
|                 |                         | STATIC<br>RATED LOAD<br>(LBS.) | DYNAMIC<br>RATED LOAD<br>(LBS.) | STATIC<br>RATED LOAD<br>(LBS.) | DYNAMIC<br>RATED LOAD<br>(LBS.) | STATIC<br>RATED LOAD<br>(LBS.) | DYNAMIC<br>RATED LOAD<br>(LBS.) | STATIC<br>RATED LOAD<br>(LBS.) | DYNAMIC<br>RATED LOAD<br>(LBS.) | PERSONNEL<br>(LBS.) |                     |                 |                         |
| 21              | 81                      | 200,000                        | 133,333                         | 160,192                        | 133,333                         | 107,709                        | 107,709                         | 11,825                         | 9,333                           | 3,407               | 21                  | 81              |                         |
| 25              | 78                      | 200,000                        | 133,333                         | 160,192                        | 133,333                         | 107,709                        | 107,709                         | 11,825                         | 9,333                           | 3,407               | 25                  | 78              |                         |
| 30              | 75                      | 200,000                        | 133,333                         | 160,192                        | 133,333                         | 107,709                        | 107,709                         | 11,825                         | 9,333                           | 3,407               | 30                  | 75              |                         |
| 35              | 72                      | 185,970                        | 122,647                         | 160,192                        | 122,647                         | 107,709                        | 107,709                         | 11,825                         | 9,333                           | 3,407               | 35                  | 72              |                         |
| 40              | 68                      | 162,244                        | 106,829                         | 160,192                        | 106,829                         | 107,709                        | 106,829                         | 11,825                         | 9,333                           | 3,407               | 40                  | 68              |                         |
| 45              | 65                      | 143,721                        | 94,481                          | 143,721                        | 94,481                          | 107,709                        | 94,481                          | 11,825                         | 9,333                           | 3,407               | 45                  | 65              |                         |
| 50              | 61                      | 128,614                        | 84,409                          | 128,614                        | 84,409                          | 107,709                        | 84,409                          | 11,825                         | 9,333                           | 3,407               | 50                  | 61              |                         |
| 55              | 58                      | 115,878                        | 75,919                          | 115,878                        | 75,919                          | 107,709                        | 75,919                          | 11,825                         | 9,333                           | 3,407               | 55                  | 58              |                         |
| 60              | 54                      | 104,852                        | 68,568                          | 104,852                        | 68,568                          | 104,852                        | 68,568                          | 11,825                         | 9,333                           | 3,407               | 60                  | 54              |                         |
| 65              | 50                      | 95,090                         | 62,060                          | 95,090                         | 62,060                          | 95,090                         | 62,060                          | 11,825                         | 9,333                           | 3,407               | 65                  | 50              |                         |
| 70              | 45                      | 86,269                         | 56,179                          | 86,269                         | 56,179                          | 86,269                         | 56,179                          | 11,825                         | 9,333                           | 3,407               | 70                  | 45              |                         |
| 75              | 41                      | 78,132                         | 50,755                          | 78,132                         | 50,755                          | 78,132                         | 50,755                          | 11,825                         | 9,333                           | 3,407               | 75                  | 41              |                         |
| 80              | 35                      | 70,447                         | 45,631                          | 70,447                         | 45,631                          | 70,447                         | 45,631                          | 11,825                         | 9,333                           | 3,407               | 80                  | 35              |                         |
| 83              | 30                      | 62,950                         | 40,633                          | 62,950                         | 40,633                          | 62,950                         | 40,633                          | 11,825                         | 9,333                           | 3,407               | 83                  | 30              |                         |
| 90              | 22                      | 55,200                         | 35,467                          | 55,200                         | 35,467                          | 55,200                         | 35,467                          | 11,825                         | 9,333                           | 3,407               | 90                  | 22              |                         |
| 95              | 11                      | 45,682                         | 29,121                          | 45,682                         | 29,121                          | 45,682                         | 29,121                          | 11,825                         | 9,333                           | 3,407               | 95                  | 11              |                         |
| 97              | 0                       | 37,987                         | 23,991                          | 37,987                         | 23,991                          | 37,987                         | 23,991                          | 11,825                         | 9,333                           | 3,407               | 97                  | 0               |                         |

- NOTES: - MAIN HOIST CAPACITIES ARE BASED ON 1 1/8" DIAMETER, DYFORM 18 HSLR WIRE ROPE. (BREAKING STRENGTH = 143,000 LBS.) 1793 FT. OF WIRE ROPE IS REQUIRED.
- AUXILIARY HOIST CAPACITIES ARE BASED ON TWO PART REEVING OF 3/4" DIAMETER, DYFORM 18 HSLR WIRE ROPE. (BREAKING STRENGTH = 64,800 LBS.) 350 FT. OF WIRE ROPE IS REQUIRED.
- ALL RATINGS IN ACCORDANCE WITH API SPECIFICATION 2C (SPEC 2C), FIFTH EDITION, APRIL 3, 1995.
- THE ABOVE RATINGS ARE CONSIDERED NET RATINGS AS THE MAIN LOAD BLOCK WEIGHT OF 4000 LBS. AND AUXILLARY LOAD BLOCK WEIGHT OF 200 LBS. HAVE BEEN SUBTRACTED.
- DYNAMIC RATINGS ARE BASED ON A DYNAMIC COEFFICIENT OF 2.0

CRANE SN: 060204C

P/N: N2003SK3-003



APPLIED HYDRAULIC SYSTEMS, INC.  
204 INDUSTRIAL AVENUE C  
HOUMA, LOUISIANA, U.S.A.  
(985) 851-5600

**NAUTILUS**  
MARINE CRANES

LIFTING LOAD CAPACITY CHART  
NAUTILUS MODEL 60B1AT-45/70 MARINE CRANE



| 45' BOOM - POINT RETRACTED |                        |                        |                         |                        |                         |                        |                         |                           |
|----------------------------|------------------------|------------------------|-------------------------|------------------------|-------------------------|------------------------|-------------------------|---------------------------|
| RADIUS<br>(ft)             | BOOM<br>ANGLE<br>(deg) | MAIN HOIST             |                         |                        |                         | AUX HOIST              |                         |                           |
|                            |                        | FOUR PART REEVING      |                         | SIX PART REEVING       |                         | STATIC<br>LOAD<br>(lb) | DYNAMIC<br>LOAD<br>(lb) | PERSONNEL<br>LOAD<br>(lb) |
|                            |                        | STATIC<br>LOAD<br>(lb) | DYNAMIC<br>LOAD<br>(lb) | STATIC<br>LOAD<br>(lb) | DYNAMIC<br>LOAD<br>(lb) |                        |                         |                           |
| 8.6                        | 81                     | 35,520                 | 33,333                  | 50,000                 | 33,333                  | 8,610                  | 8,610                   | 2,436                     |
| 10                         | 79                     | 35,520                 | 29,269                  | 44,304                 | 29,269                  | 8,610                  | 8,610                   | 2,436                     |
| 15                         | 72                     | 30,532                 | 20,088                  | 30,532                 | 20,088                  | 8,610                  | 8,610                   | 2,436                     |
| 20                         | 66                     | 22,800                 | 14,933                  | 22,800                 | 14,933                  | 8,610                  | 8,610                   | 2,436                     |
| 25                         | 58                     | 17,842                 | 11,628                  | 17,842                 | 11,628                  | 8,610                  | 8,610                   | 2,436                     |
| 30                         | 51                     | 14,382                 | 9,321                   | 14,382                 | 9,321                   | 8,610                  | 8,610                   | 2,436                     |
| 35                         | 41                     | 11,837                 | 7,625                   | 11,837                 | 7,625                   | 8,610                  | 8,215                   | 2,436                     |
| 40                         | 30                     | 9,874                  | 6,316                   | 9,874                  | 6,316                   | 8,610                  | 6,906                   | 2,436                     |
| 45                         | 0                      | 8,291                  | 5,261                   | 8,291                  | 5,261                   | 8,610                  | 5,851                   | 2,436                     |

| 70' BOOM - POINT EXTENDED |                        |                        |                         |                        |                         |                        |                         |                           |
|---------------------------|------------------------|------------------------|-------------------------|------------------------|-------------------------|------------------------|-------------------------|---------------------------|
| RADIUS<br>(ft)            | BOOM<br>ANGLE<br>(deg) | MAIN HOIST             |                         |                        |                         | AUX HOIST              |                         |                           |
|                           |                        | FOUR PART REEVING      |                         | SIX PART REEVING       |                         | STATIC<br>LOAD<br>(lb) | DYNAMIC<br>LOAD<br>(lb) | PERSONNEL<br>LOAD<br>(lb) |
|                           |                        | STATIC<br>LOAD<br>(lb) | DYNAMIC<br>LOAD<br>(lb) | STATIC<br>LOAD<br>(lb) | DYNAMIC<br>LOAD<br>(lb) |                        |                         |                           |
| 11                        | 81                     | 34,964                 | 23,043                  | 34,964                 | 23,043                  | 8,610                  | 8,610                   | 2,436                     |
| 15                        | 78                     | 26,825                 | 17,617                  | 26,825                 | 17,617                  | 8,610                  | 8,610                   | 2,436                     |
| 20                        | 74                     | 20,111                 | 13,141                  | 20,111                 | 13,141                  | 8,610                  | 8,610                   | 2,436                     |
| 25                        | 69                     | 15,776                 | 10,251                  | 15,776                 | 10,251                  | 8,610                  | 8,610                   | 2,436                     |
| 30                        | 65                     | 12,737                 | 8,225                   | 12,737                 | 8,225                   | 8,610                  | 8,610                   | 2,436                     |
| 35                        | 60                     | 10,496                 | 6,731                   | 10,496                 | 6,731                   | 8,610                  | 7,321                   | 2,436                     |
| 40                        | 56                     | 8,767                  | 5,578                   | 8,767                  | 5,578                   | 8,610                  | 6,168                   | 2,436                     |
| 45                        | 50                     | 7,400                  | 4,667                   | 7,400                  | 4,667                   | 7,990                  | 5,257                   | 2,436                     |
| 50                        | 45                     | 6,285                  | 3,923                   | 6,285                  | 3,923                   | 6,875                  | 4,513                   | 2,152                     |
| 55                        | 39                     | 5,360                  | 3,307                   | 5,360                  | 3,307                   | 5,950                  | 3,897                   | 1,843                     |
| 60                        | 32                     | 4,518                  | 2,745                   | 4,518                  | 2,745                   | 5,108                  | 3,335                   | 1,563                     |
| 65                        | 22                     | 3,914                  | 2,343                   | 3,914                  | 2,343                   | 4,504                  | 2,933                   | 1,361                     |
| 70                        | 0                      | 3,329                  | 1,953                   | 3,329                  | 1,953                   | 3,919                  | 2,543                   | 1,166                     |

NOTE: - MAIN HOIST CAPACITIES ARE BASED ON 4 OR 6 PART REEVING OF 5/8" DIAMETER, DYFORM-18 HSLR WIRE ROPE. (BREAKING STRENGTH = 45,400 LBS.). 677 FT. OF ROPE IS REQUIRED.  
 - AUX HOIST CAPACITIES ARE BASED ON ONE PART REEVING OF 5/8" DIAMETER, DYFORM-18 HSLR WIRE ROPE. (BREAKING STRENGTH = 45,400 LBS.). 287 FT. OF ROPE IS REQUIRED.  
 - SHEAVE EFFICIENCY IS INCLUDED.  
 - ALL RATINGS IN ACCORDANCE WITH API SPECIFICATION 2C (SPEC 2C), FIFTH EDITION, APRIL 3, 1995. A DYNAMIC COEFFICIENT (cb) OF 2.0 IS USED.  
 - THE ABOVE RATINGS ARE CONSIDERED "NET RATINGS" AS THE LOAD BLOCK WEIGHT OF 800 LBS AND THE OVERHAUL BALL WEIGHT OF 210 LBS HAS ALREADY BEEN SUBTRACTED