



# L/B CHARLESTON

200' CLASS LIFTBOAT

OFFICIAL # 1244722

U.S.COAST GUARD 46CFR, SUBCHAPTER L

LLOYDS LOAD LINE

## GENERAL DIMENSIONS

Length Overall	115'
Length Hull Only	111'-3"
Width Overall	74'
Width Hull Only	66'-6"
Hull Depth	10'
Open Deck	4,000 sq. ft.
Usable Deck	4,500 sq. ft.

## LIVING QUARTERS

Crew Accommodations	7
VIP Accommodations	2
<u>PACS Accommodations</u>	<u>34</u>
Total Bunks	43

## HULL CHARACTERISTICS

Gross Tonnage	200 US GT
Net Tonnage	TBD
Max. Deck Cargo	800,000 lbs

## ELECTRONICS

VHS, SSB, Loud Hailer  
Radar, Fathometer, GPS  
Tilt Alarm

## LEGS

Quantity	3
Length	200'
Size	66"
Wall Thickness	3/4"-1"

## PROPULSION

(2) Main Eng.	Cat. M18, Teir 2
Horse Power (Total)	1200
Reduction Gears	MG-516, 5.05:1
Transit Speed	6 knots

## PADS

Length	32'
Width	16'
Depth	30"

## GENERATORS

(2) 203 KW CAT, C-9 Marine

## JACKING

Max. Working Depth	160'
Max. Sea Condition (Jacking Up & Down)	5'
Total Jacks	24

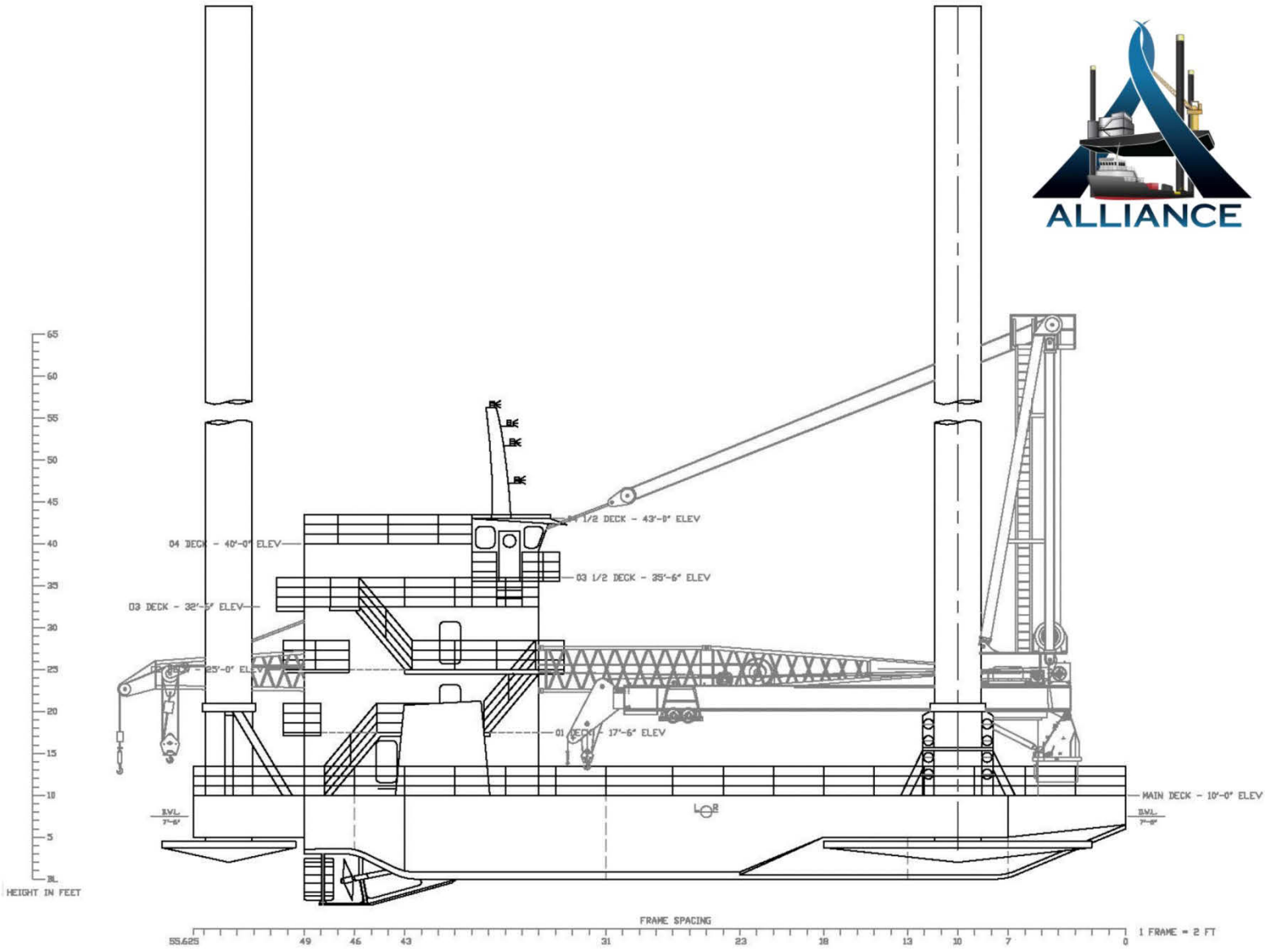
## CRANES

Port 125 Ton w/100' Lattice Boom  
Starboard. 30 Ton w/70' Box Boom

## CAPACITIES

Fuel	9,730 gls.
Potable Water	15,195 gls.

# L/B CHARLESTON



OUTBOARD PROFILE

SCALE 3/16" = 1'-0"

## GENERAL INFORMATION

HULL LENGTH	111'-3"
HULL WIDTH	66'-6"
HULL DEPTH	10'-0"
LENGTH OVERALL	115'-0"
WIDTH OVERALL	74'-9"
FOOTING LENGTH	32'-0"
FOOTING WIDTH	16'-0"
FOOTING DEPTH	2'-6"
LEG LENGTH OVERALL	200'-0"
LEG DIAMETER	66"
LEG THICKNESS	1" / 3/4"
LEG MATERIAL	API 5L-X65
JACKS PER LEG	QTY EIGHT
JACKING RATING / JACK	63.75 S-TONS
HOLDING RATING / JACK	87.67 S-TONS
JACKING RATING / LEG	525.0 S-TONS
HOLDING RATING / LEG	701.3 S-TONS
TOTAL JACKS	QTY 24
TOTAL JACKING RATING	1578.0 S-TONS
TOTAL HOLDING RATING	2104.0 S-TONS
FUEL OIL CAPACITY	9,730 GAL
POTABLE WATER CAPACITY	15,194 GAL
JACKING HYDRAULIC OIL	1,594 GAL
CRANE HYDRAULIC OIL	789 GAL
ACCOMMODATION CREW	7 MEN
ACCOMMODATION V/P	2 MAN
ACCOMMODATION PACS	34 MEN
ACCOMMODATION TOTAL	43 MEN

M/V MISS LYNNE CONRAD HULL NO. C-1003

## REVISIONS

DYNAMICS MARINE, INC.  
225 MONSANTO ST., LULING, LA 70070  
504-785-2118

CONRAD SHIPYARD, L.L.C.

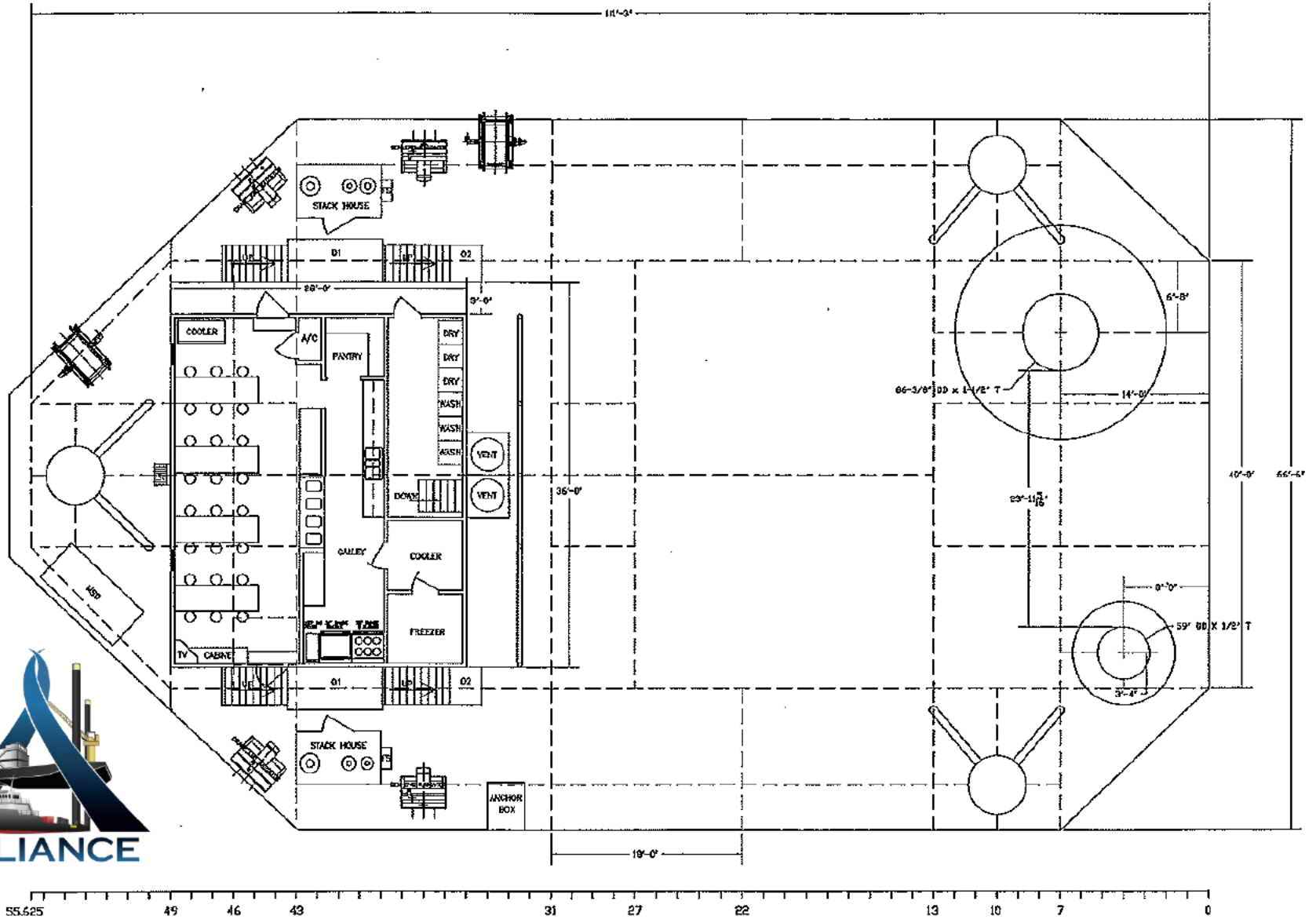
ALLIANCE OFFSHORE, LLC

CLASS 200 LIFT/DAT  
OUTBOARD PROFILE

DATE: 22JUL13 APPV:

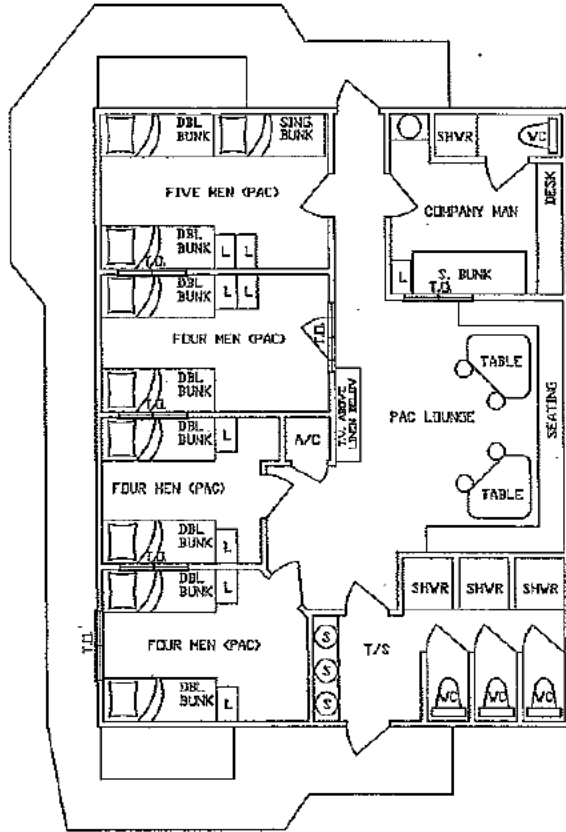
BY: GT

NO GA-01



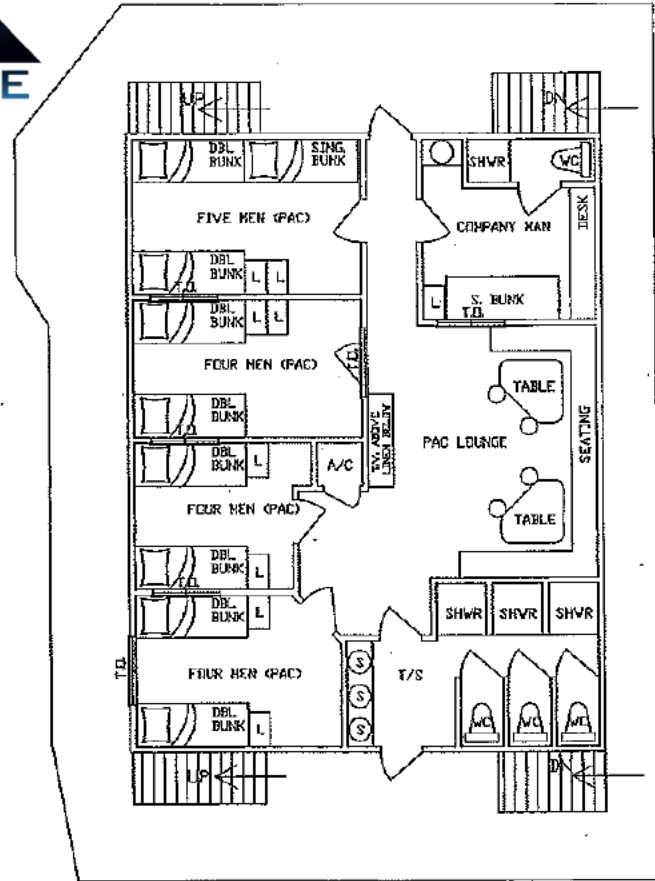
GENERAL ARRANGEMENT MAIN DECK

SCALE 3/16" = 1'-0"



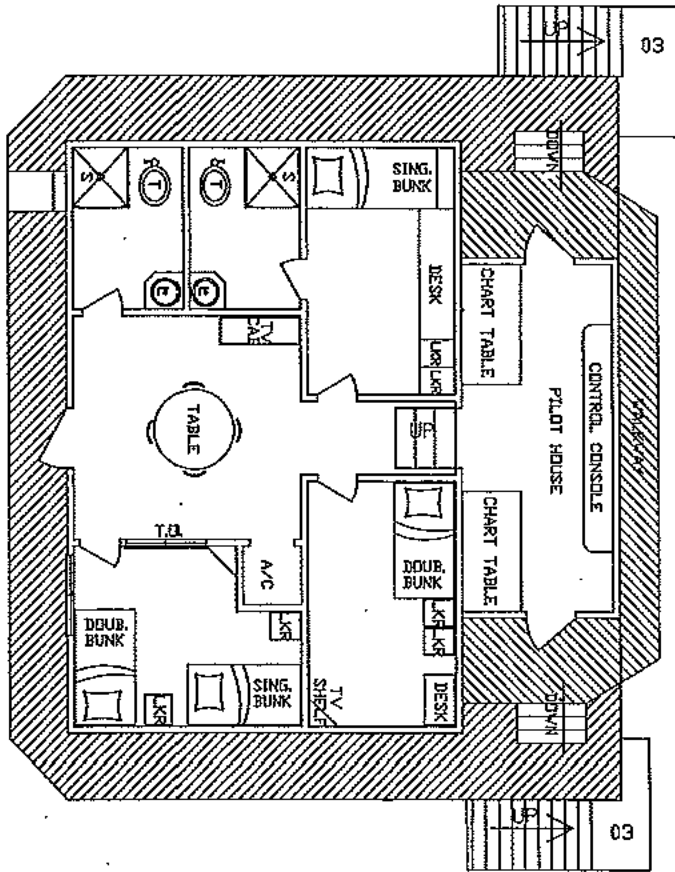
GENERAL ARRANGEMENT 01 LEVEL

SCALE 1/4" = 1'-0"



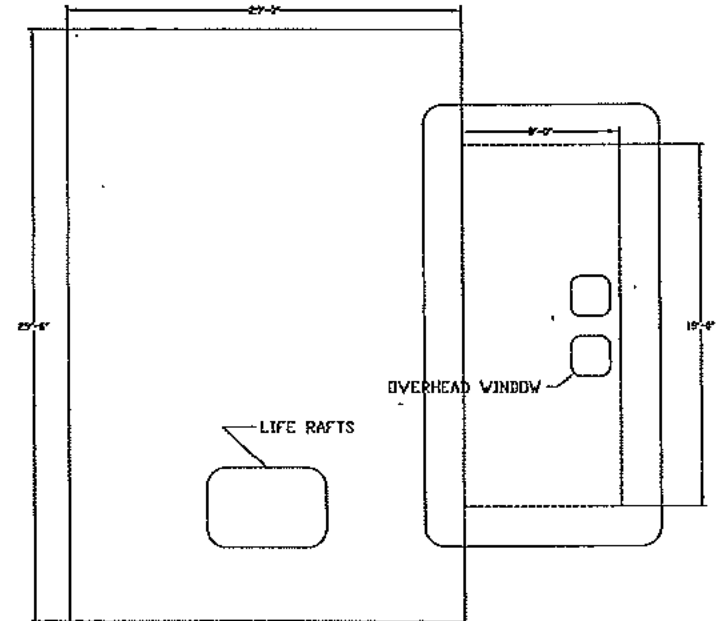
GENERAL ARRANGEMENT 02 LEVEL

SCALE 1/4" = 1'-0"



GENERAL ARRANGEMENT 03 LEVEL

SCALE 1/4" = 1'-0"



GENERAL ARRANGEMENT 04 LEVEL

SCALE 1/4" = 1'-0"



# TECHCRANE L-200-100

8 PART – MAIN LOAD LINE					
Reach Radius (Feet)	Boom Angle (Deg)	On Board Lift (Pounds)	Off Board Lift (Pounds)	Aux. Hoist Lift (Pounds)	Personnel Rating Lift (Pounds)
20	82	250000	192000	–	3300
25	79	250000	186000	10000	3300
30	76	235000	155500	10000	3300
35	73	200000	132166	10000	3300
40	70	173400	114433	10000	3300
45	67	152700	100633	10000	3300
50	64	136200	89633	10000	3300
55	60	122600	80566	10000	3300
60	57	111390	73093	10000	3300
65	54	101855	66736	10000	3300
70	50	93676	61284	10000	3300
75	46	86586	56557	10000	3300
80	42	80383	52422	10000	3300
85	37	74910	48773	10000	3300
90	32	70045	45530	10000	3300
95	26	65692	42628	10000	3300
100	0	61774	40016	10000	3300
108	0	–	–	10000	3300



70 ft. Boom      TECHCRANE MODEL F-60-70

Reach (ft.)	Boom Angle (deg.)	Static Load Line (lbs.)	Dynamic Load Line (lbs.)
10	81.8	70,000	57,559
15	77.6	59,557	39,706
20	73.4	46,119	30,747
25	69.1	38,021	25,348
30	64.6	32,597	21,732
35	60.0	28,702	19,136
40	55.2	25,764	17,177
45	50.0	23,463	15,643
50	44.4	21,604	14,403
55	38.2	20,056	13,371
60	31.0	18,717	12,479
65	21.8	17,178	11,453
70	0.0	15,207	10,138

API Maximum Overturning Moment (ft.-lbs.) 2,646,004