



**L/B A-V/MEMPHIS**  
**200' Class**

Self-Elevating Vessel – Built - 1998  
 OFF. # 1062037 – Call Sign WDC2334

**Alliance Offshore, LLC**  
 P. O. Box 999  
 Larose, LA 70373  
 Phone: 985-798-5700  
 Fax: 985-798-5738

**DIMENSIONS:**

Length (Overall)	131'
Beam (Overall)	77'
Beam (Barge Only)	69'
Depth (Barge Only)	10'
Design Draft	9'

**Hull Characteristics:**

Gross Tonnage (US Regulatory)	Under 200
Open Deck Area	4,000 sq. ft.
Total Usable Space	5,000 sq. ft.
Variable Allowable Load	550,000 Lbs.

**LEGS:**

Number	3
Length	200'
Size	52" diameter x 1.5" wall thickness
Material	API 5LX-70 KSI Steel

**PADS:**

Length	28'
Width	13' 9"
Depth	3'
Configuration	Raked on both ends

**REGULATORY CLASSIFICATION:**

USCG O.S.V. ABS Load Line

**CRANE CAPACITY:**

Number	2 (API-2C Certified)
Primary Crane	100 Tons @ 25' radius
Boom Length	100' lattice type
Heel Pin	12' above deck
Auxiliary Crane	25 Tons @ 10' radius
Boom Length	(Telescoping) 40'-70'

**PROPULSION:**

Main Engines	(2) Caterpillar 3508
Horsepower/engine	855 @ 1800 rpm
Reduction Gear	Twin Disc MG-530 5:1

**CAPACITIES:**

Fuel	10,300 gal
Potable Water	10,600 gal
Lube Oil	350 gal
Hydraulic Oil	525 gal
Submersible Pumps	2 @ 150 GPM each

**GENERATORS:**

Engines	(2) Caterpillar 3306
Generators	(2) 95 KW

**LIVING QUARTERS:**

Berths	Total 36 ( 6 Crew / 30 PACs)
Galley	Ref., Fr., Ice Maker, Range
Sanitary Facilities	(6) Heads
Laundry	(2) Washers and (2) Dryers

**NAVIGATION EQUIPMENT:**

Radar, VHF's, Fathometer, Compass,  
 Single Sideband, AIS, Auto Pilot, GPS,  
 Anemometer, Electronic Charting,

**JACKING:**

Maximum Working Water Depth	150'
Maximum Height of Deck above mud line (Subtract Penetration)	186'

**SPECIAL FEATURES:**

Separate VIP Room Facilities,  
 Zero Discharge Capability,  
 Marine Sewage Treatment System

**ESTIMATED SPEED:** 6 Knots

**FUEL CONSUMPTION:**

Cat 3508-B	
Main Engines	85.6 gal/hr = 2,054 gal/day
Cat 3306-B	
Generators	10.7 gal/hr = 256 gal/day
Cat 3412	
Main Crane	31 gal/hr = 744 gal/day
Cat 3306-B	
Aux. Crane	10.7 gal/hr = 256 gal/day

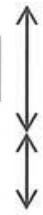


200' Class

Leg Length  
200'

Leg Tower 13'

Hull 10'



Heel Pin 11'  
Above Deck

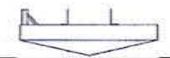
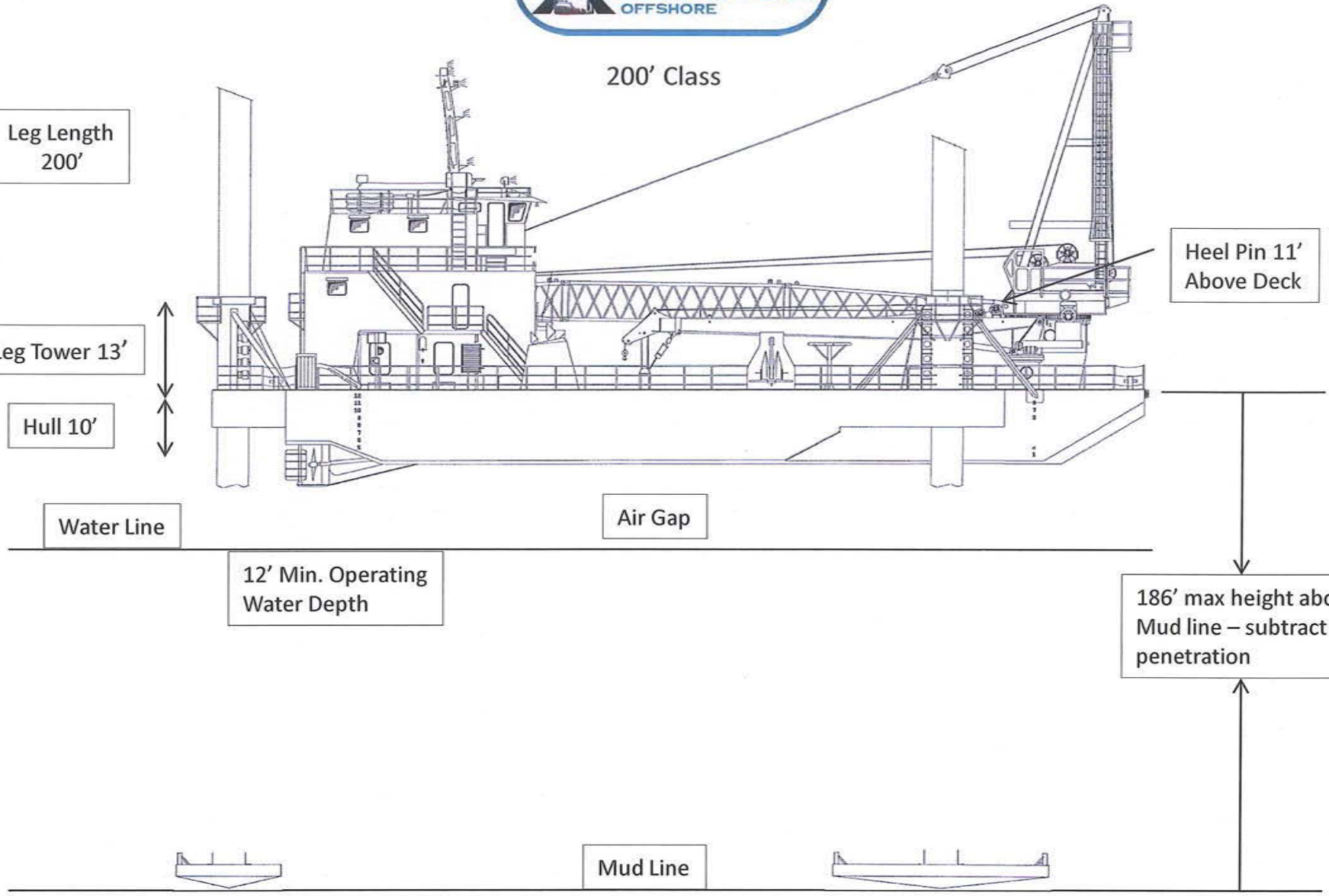
Water Line

Air Gap

12' Min. Operating  
Water Depth

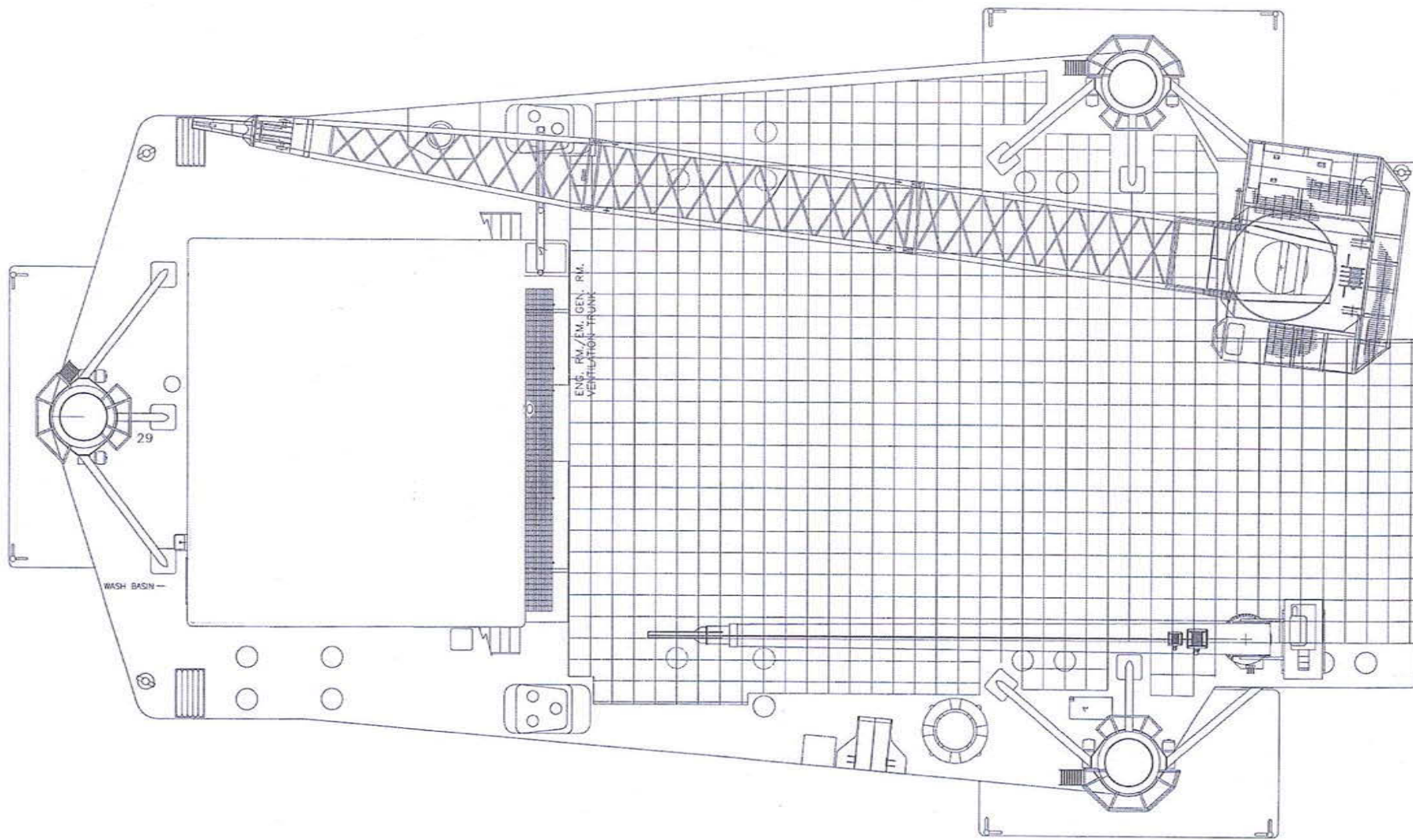
186' max height above  
Mud line – subtract  
penetration

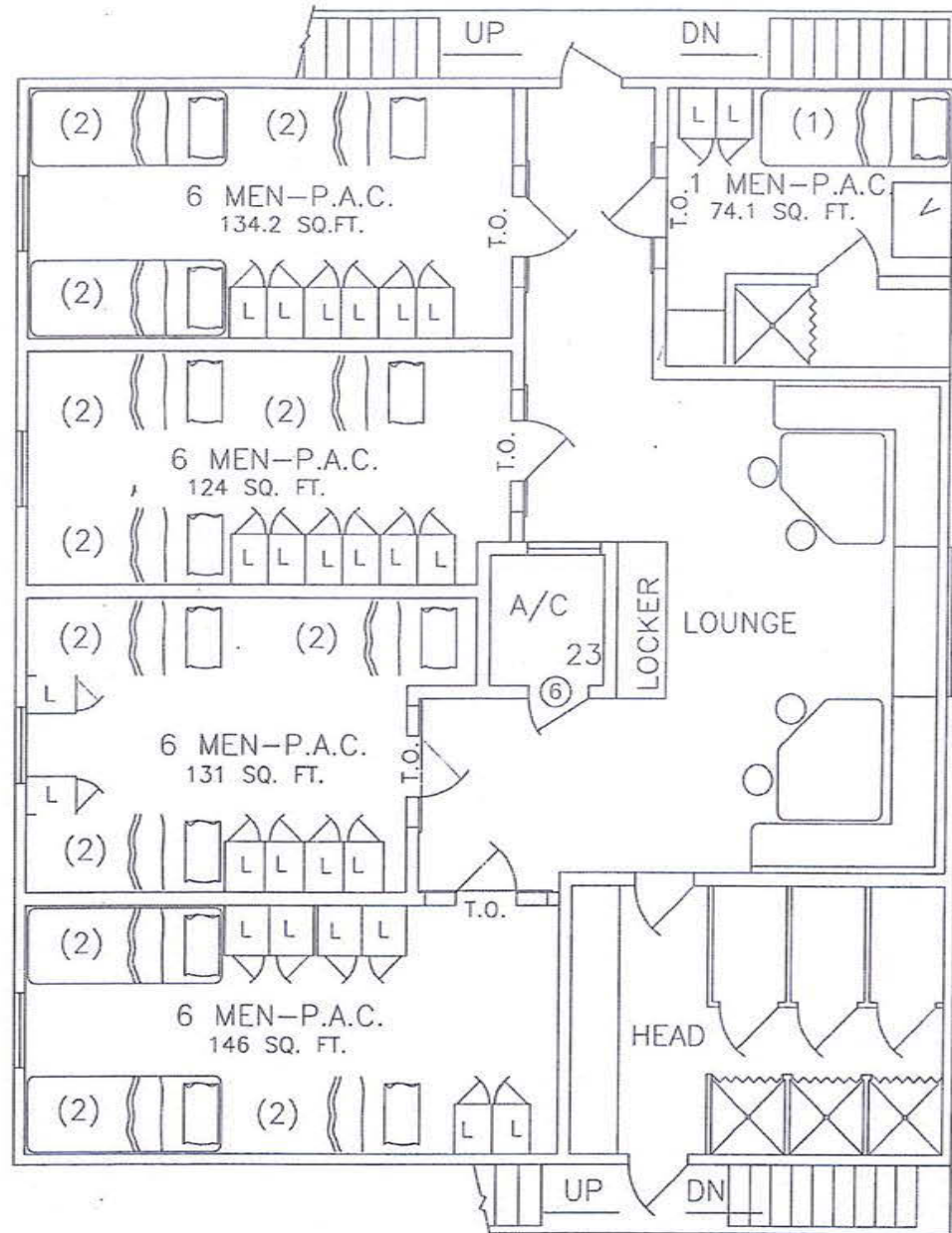
Mud Line



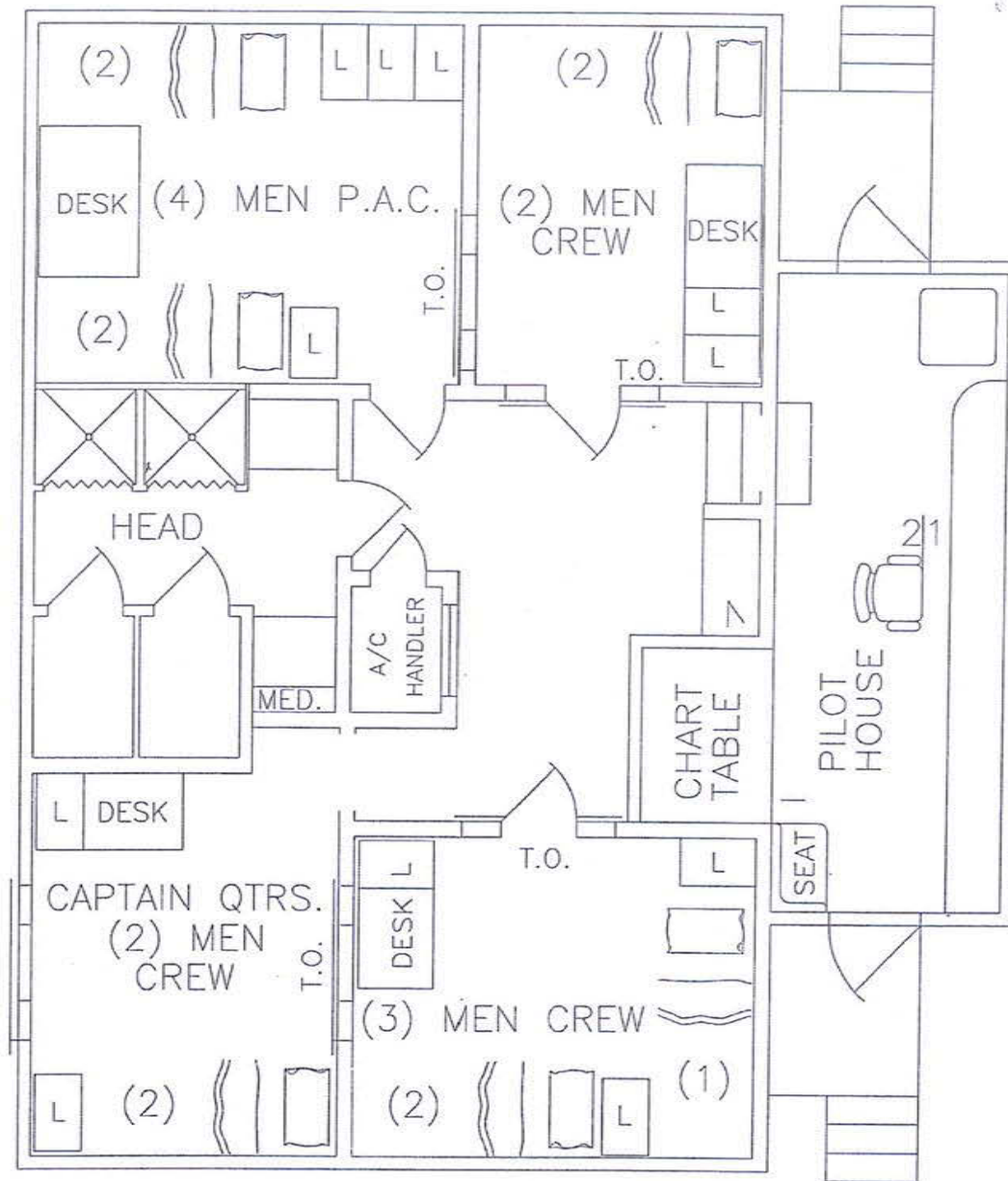


## 200 Class 2' x 2' Deck Grid





01 Quarters



DECK LEVEL 02



**LOAD RATING CHART**

**AMCLYDE UNIT MODEL 20000 (100 TON - LARGE CRANE)**

**SERIAL NUMBER 1607200**

**SEA-BOTTOM SUPPORTED RATINGS ONLY**

<b>90 FOOT BOOM LENGTH</b>			
<b>MAIN HOOK LIFTING CAPACITY - POUNDS*</b>			
<b>LOAD RADIUS FROM CENTERLINE OF ROTATION</b>			
<b>LOAD RADIUS IN FEET</b>	<b>BOOM ANGLE</b>	<b>8 PARTS OF A LINE</b>	
		<b>STATIC</b>	<b>DYNAMIC</b>
25	78	200,000	133,000
30	75	200,000	127,000
35	72	165,000	108,000
40	68	142,000	93,000
45	65	125,000	81,000
50	61	110,000	72,000
55	57	99,000	64,000
60	54	90,000	58,000
65	49	82,000	53,000
70	45	76,000	48,000
75	40	70,000	45,000
80	35	65,000	41,000
85	29	60,000	38,000
90	21	57,000	36,000
95	9	53,000	33,000
96	0	50,000	31,000



**MODEL TC30-40-70 40FT RETRACTED (25 TON - SMALL CRANE)  
API LOAD CHART**

REACH FT	DYN. LOAD LBS	STAT. LOAD LBS	BOOM ANG. DEG.	REACH FT.	DYN. LOAD LBS.	STAT. LOAD LBS.	BOOM ANG. DEG.
10	35090	53240	75.5	----	----	----	----
15	25740	39215	68.5	----	----	----	----
20	20040	30665	60.5	----	----	----	----
25	16590	25490	52.5	----	----	----	----
30	13840	21365	43	----	----	----	----
35	11390	17690	31	----	----	----	----
40	6840	10865	0	----	----	----	----

**MODEL TC30-40-70 50FT EXTENDED  
API LOAD CHART**

REACH FT	DYN. LOAD LBS	STAT. LOAD LBS	BOOM ANG. DEG.	REACH FT.	DYN. LOAD LBS.	STAT. LOAD LBS.	BOOM ANG. DEG.
10	20490	20490	78	45	8090	12740	27
15	20490	20490	72.5	50	4690	7640	0
20	19090	20490	66.5	----	----	----	----
25	15540	20490	60	----	----	----	----
30	13140	20315	53.5	----	----	----	----
35	11190	17390	46	----	----	----	----
40	9590	14990	67.5	----	----	----	----

**MODEL TC30-40-70 60FT EXTENDED  
API LOAD CHART**

REACH FT	DYN. LOAD LBS	STAT. LOAD LBS	BOOM ANG. DEG.	REACH FT.	DYN. LOAD LBS.	STAT. LOAD LBS.	BOOM ANG. DEG.
10	20290	20290	80	45	7890	12440	42
15	20040	20290	75.5	50	6840	10865	34
20	16190	20290	70.5	55	5790	9290	25
25	13510	20290	65.5	60	3140	5315	0
30	11540	17915	60	----	----	----	----
35	10040	15665	54.5	----	----	----	----
40	8790	13790	48.5	----	----	----	----

**MODEL TC30-40-70 70FT EXTENDED  
API LOAD CHART**

REACH FT	DYN. LOAD LBS	STAT. LOAD LBS	BOOM ANG. DEG.	REACH FT.	DYN. LOAD LBS.	STAT. LOAD LBS.	BOOM ANG. DEG.
10	20290	20290	81.5	50	4790	7790	44.5
15	17040	20290	77.5	55	4240	6965	38.5
20	12290	19040	73	60	3790	6290	31.5
25	10240	15965	69	65	3390	5690	22.5
30	8590	13490	64.5	70	1990	3590	0
35	7290	11540	60	----	----	----	----
40	6390	10190	55.5	----	----	----	----
45	5440	8765	50	----	----	----	----